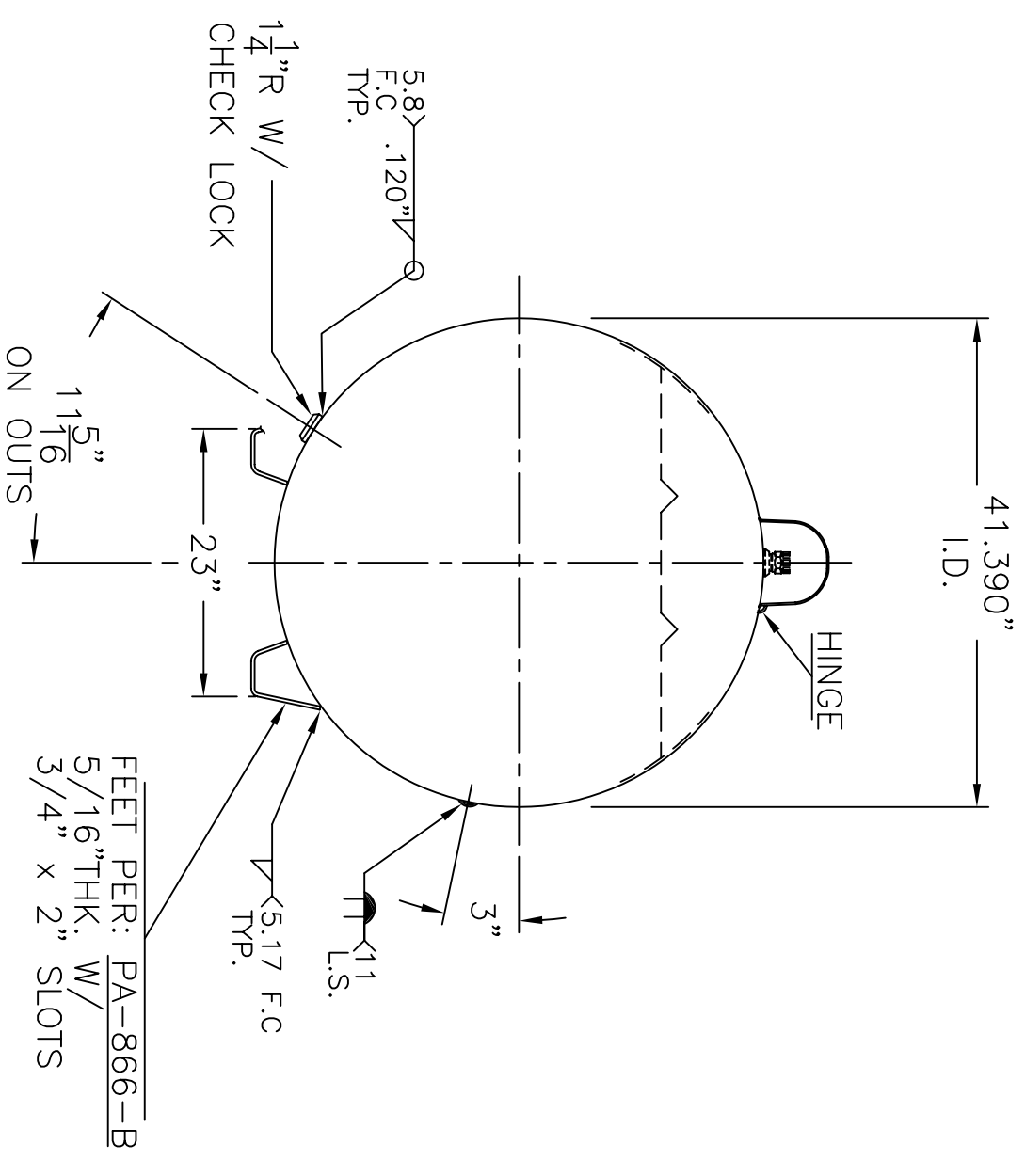
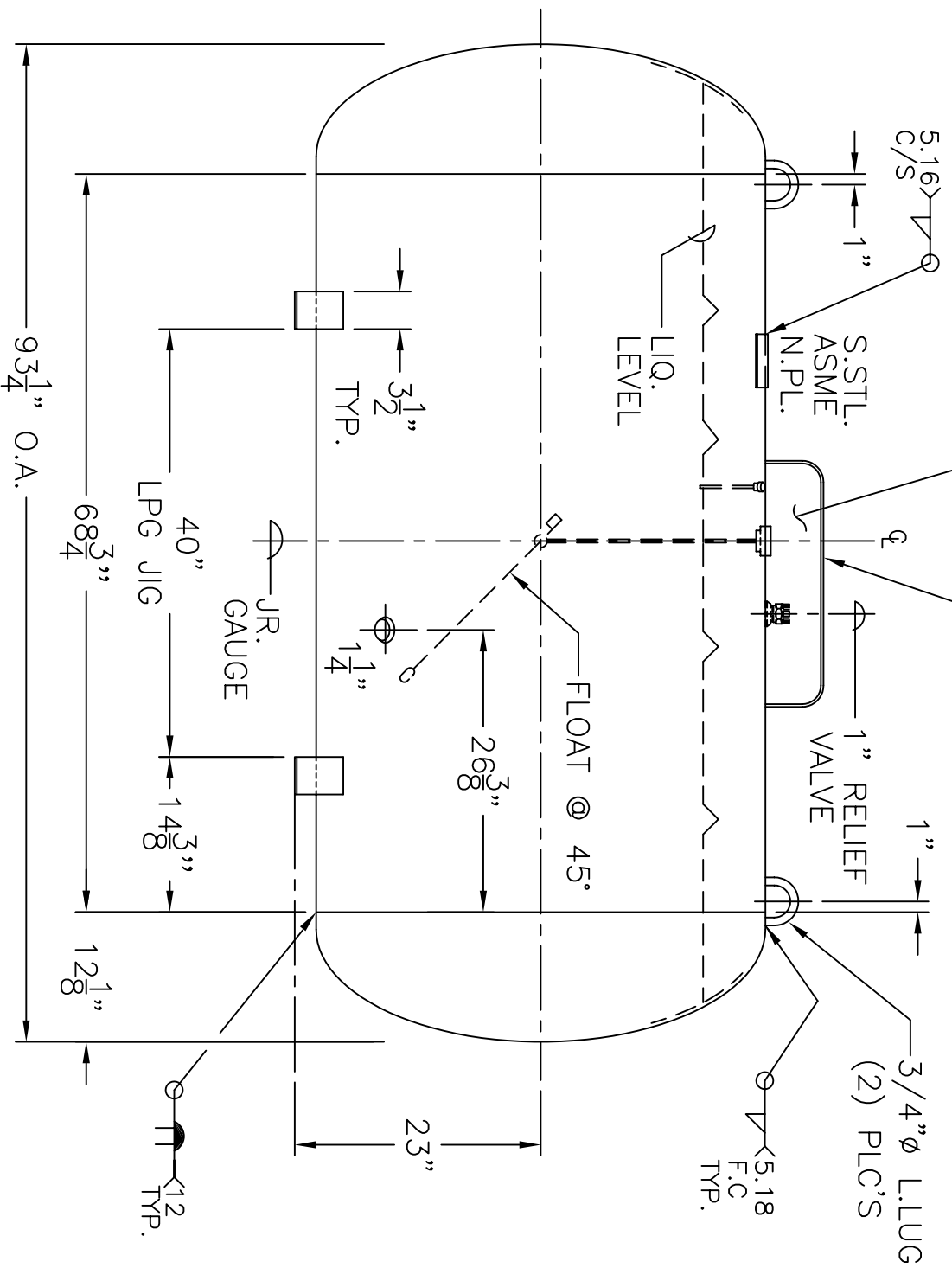


NOTE: P.O.L. V.R. FILLER, OUTAGE OMITTED FROM THIS VIEW FOR CLARITY

LAYOUT DIMENSIONS PER:
 UNIVERSAL - - - - - SK-2617 REV. II
 CALIFORNIA STD. - - - - - PA-432-A
 NEVADA STD. - - - - - PA-433-A



GENERAL NOTES

1. SHELL: .289" SA-455
2. HEADS: .245" SA-455 2:1 S.E. JOGGLE
3. X-RAY: RT-4 SPOT L.S. & G.S.
4. STRESS REL., NO
5. CORR. ALLOW: NONE
6. ASME SEC. VIII DIV. 1, 2010 ADD 2010 12. SURFACE AREA: 92.7 SQ. FT.
7. M.A.W.P. 250 PSIG. @ 200 °F
M.D.M.T. -20 °F @ 250 PSIG.
8. HYDRO: 327 PSIG. MIN.
9. GAL: 499
10. EMPTY WT: 1171# APPROX.
11. DEHYDRATE INSIDE
13. C.F.M. REQ'D. 2200

P-499-42" REV. 12-30-10
 DATE: 3-12-87

FOR: HANSON STANDARD
 MODEL No. 499

42"Ø - HORIZ. PROPANE TANK
 BY: J.G. SCALE: 3/4"=12"

ROY E. HANSON JR. MFG.
 1600 E. WASHINGTON BLVD.
 LOS ANGELES, CA 90021