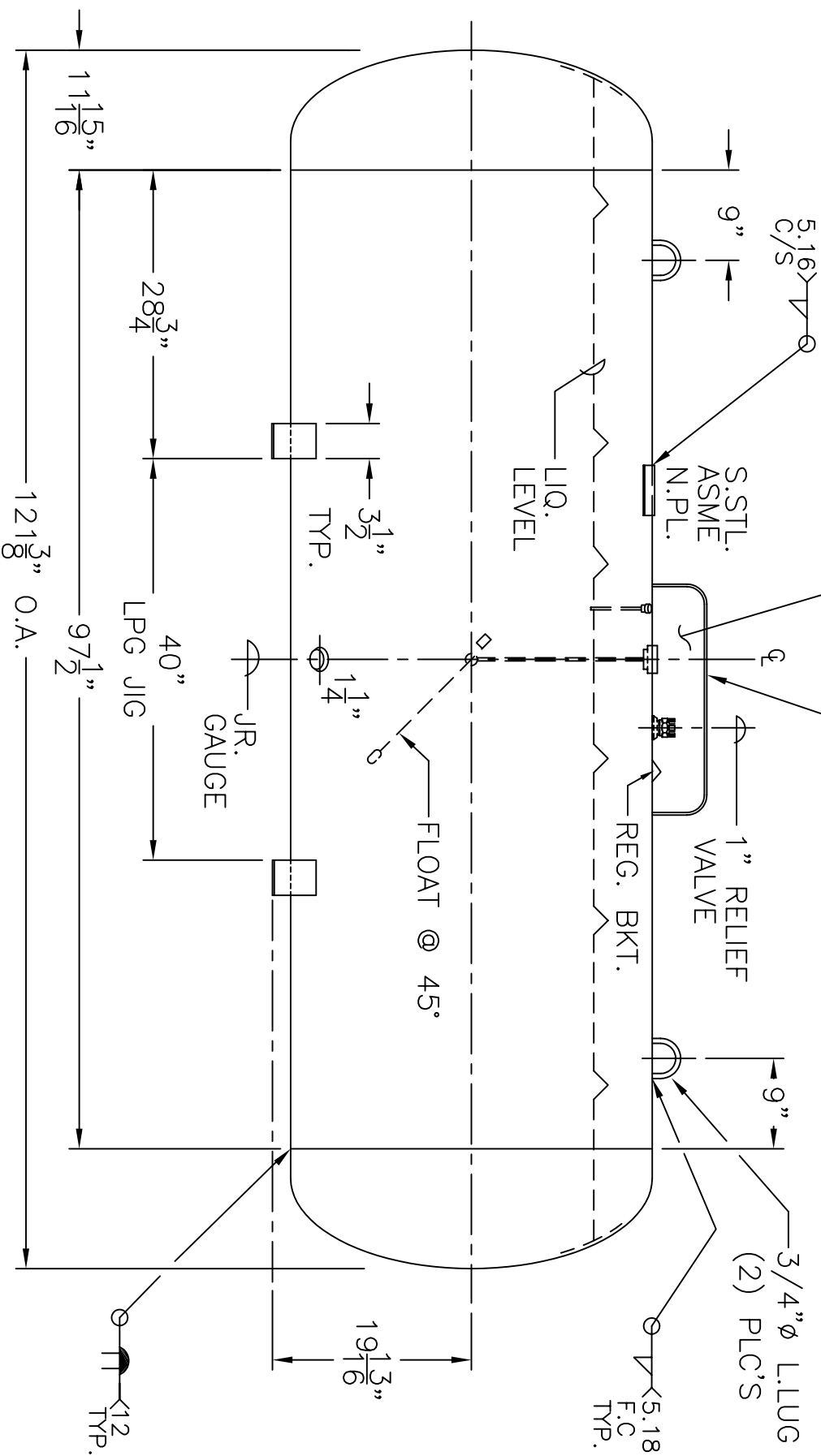


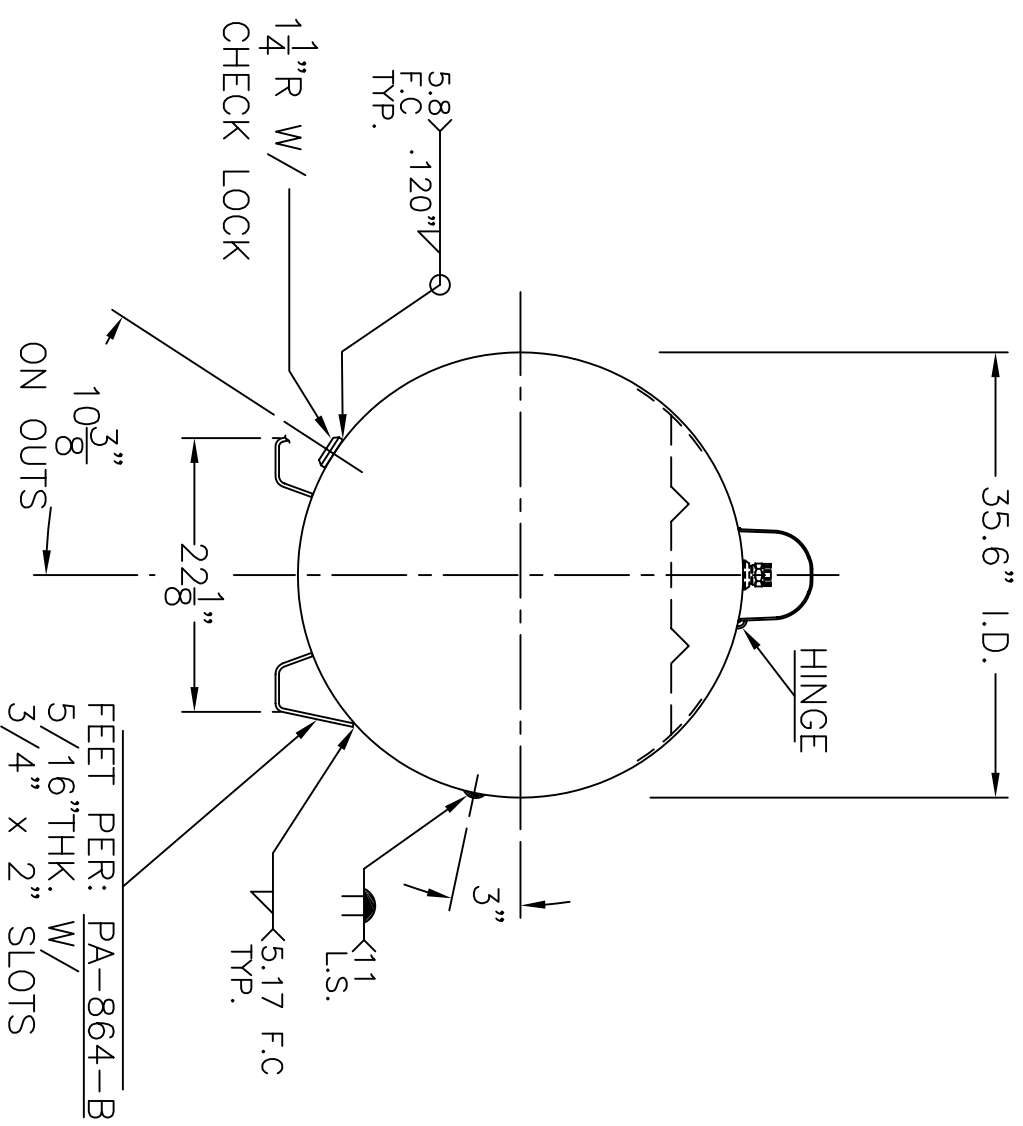
NOTE: P.O.L. V.R. FILLER, OUTAGE OMITTED FROM THIS VIEW FOR CLARITY

LAYOUT DIMENSIONS PER: UNIVERSAL --- SK-2617 REV. II CALIFORNIA STD. --- PA-432-A NEVADA STD. --- PA-433-A



GENERAL NOTES

1. SHELL: .250" SA-455
2. HEADS: .211" SA-455 2:1 S.E. JOGGLE
3. X-RAY: RT-4 SPOT L.S. & G.S.
4. STRESS REL., NO
5. CORR. ALLOW: NONE
6. ASME SEC. VIII DIV. 1, 2007 ADD 2009
7. M.A.W.P. 250 PSIG. @ 200 °F. M.D.M.T. -20 °F @ 250 PSIG.
8. HYDRO: 327 PSIG. MIN.
9. GAL: 499
10. EMPTY WT: 1070# APPROX.
11. DEHYDRATE INSIDE
12. SURFACE AREA: 100.1 SQ. FT.
13. C.F.M. REQ'D. 2344



<b>P-499-36"</b>		REV. 1-14-09
FOR: HANSON STANDARD		DATE: 10-23-98
MODEL No. 499		
36"Ø - HORIZ. PROPANE TANK		
BY: J.G.	SCALE: 3/4"=12"	
<b>ROY E. HANSON JR. MFG.</b>		
1600 E. WASHINGTON BLVD.		
LOS ANGELES, CA 90021		