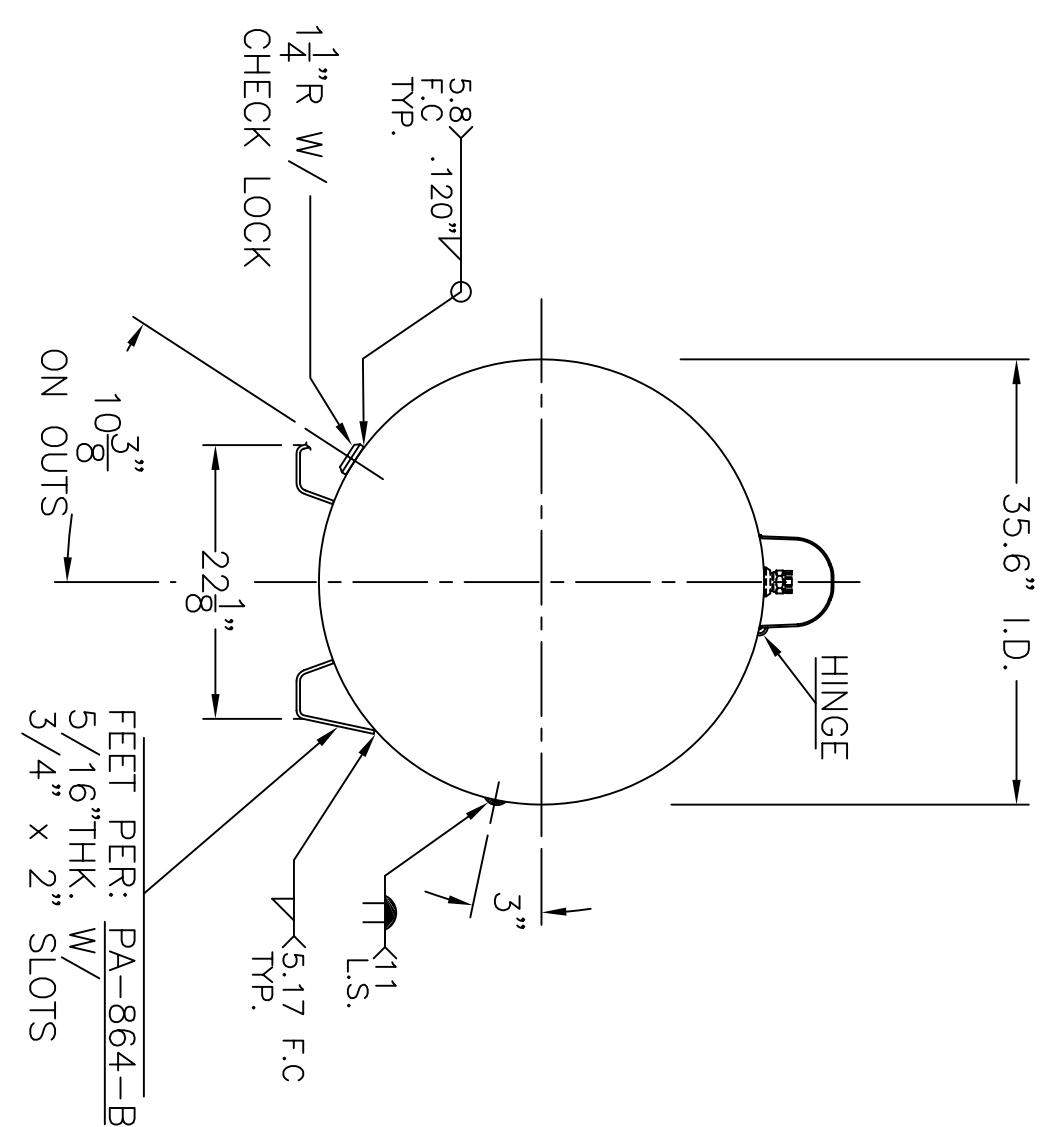
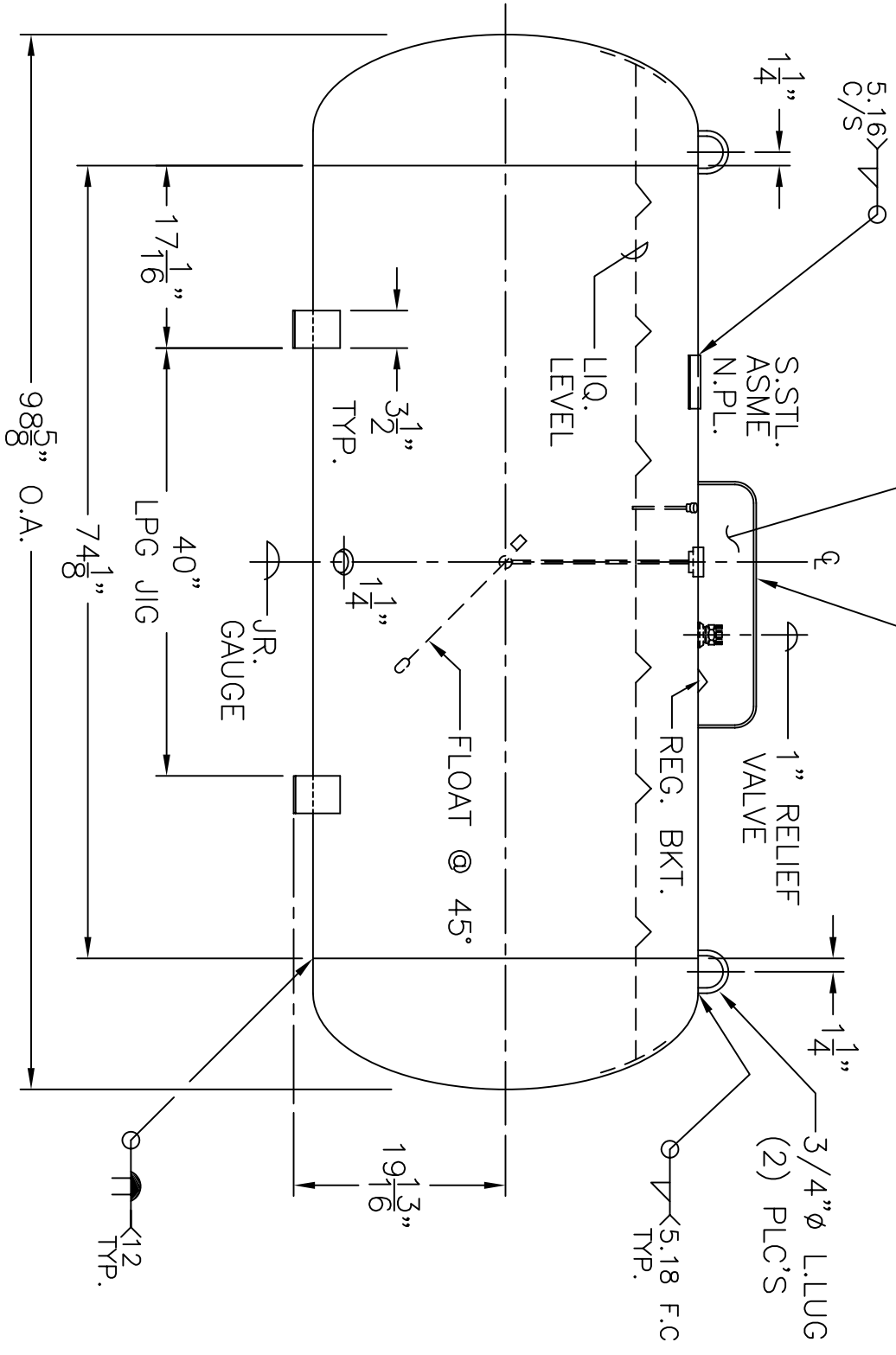


NOTE: P.O.L. V.R. FILLER, OUTAGE OMITTED FROM THIS VIEW FOR CLARITY

LAYOUT DIMENTIONS PER:
 UNIVERSAL - - - - - SK-2617 REV. II
 CALIFORNIA STD. - - - - - PA-432-A
 NEVADA STD. - - - - - PA-433-A



GENERAL NOTES

1. SHELL: .248" SA-455
2. HEADS: .211" SA-455 2:1 S.E. JOGGLE
3. X-RAY: RT-4 SPOT L.S. & G.S.
4. STRESS REL., NO
5. CORR. ALLOW: NONE
6. ASME SEC. VIII DIV. 1, 2007 ADD 2009
7. M.A.W.P. 250 PSIG. @ 200 °F
M.D.M.T. -20 °F @ 250 PSIG.
8. HYDRO: 327 PSIG. MIN.
9. GAL: 400
10. EMPTY WT: 883# APPROX.
11. DEHYDRATE INSIDE
12. SURFACE AREA: 83.2 SQ. FT.
13. C.F.M. REQ'D. 2013.4

P-400-36" REV. 1-14-10
 DATE: 2-22-00

FOR: HANSON STANDARD
 MODEL No. 400

36"Ø - HORIZ. PROPANE TANK
 BY: J.G. SCALE: 3/4"=12"

ROY E. HANSON JR. MFG.
 1600 E. WASHINGTON BLVD.
 LOS ANGELES, CA 90021