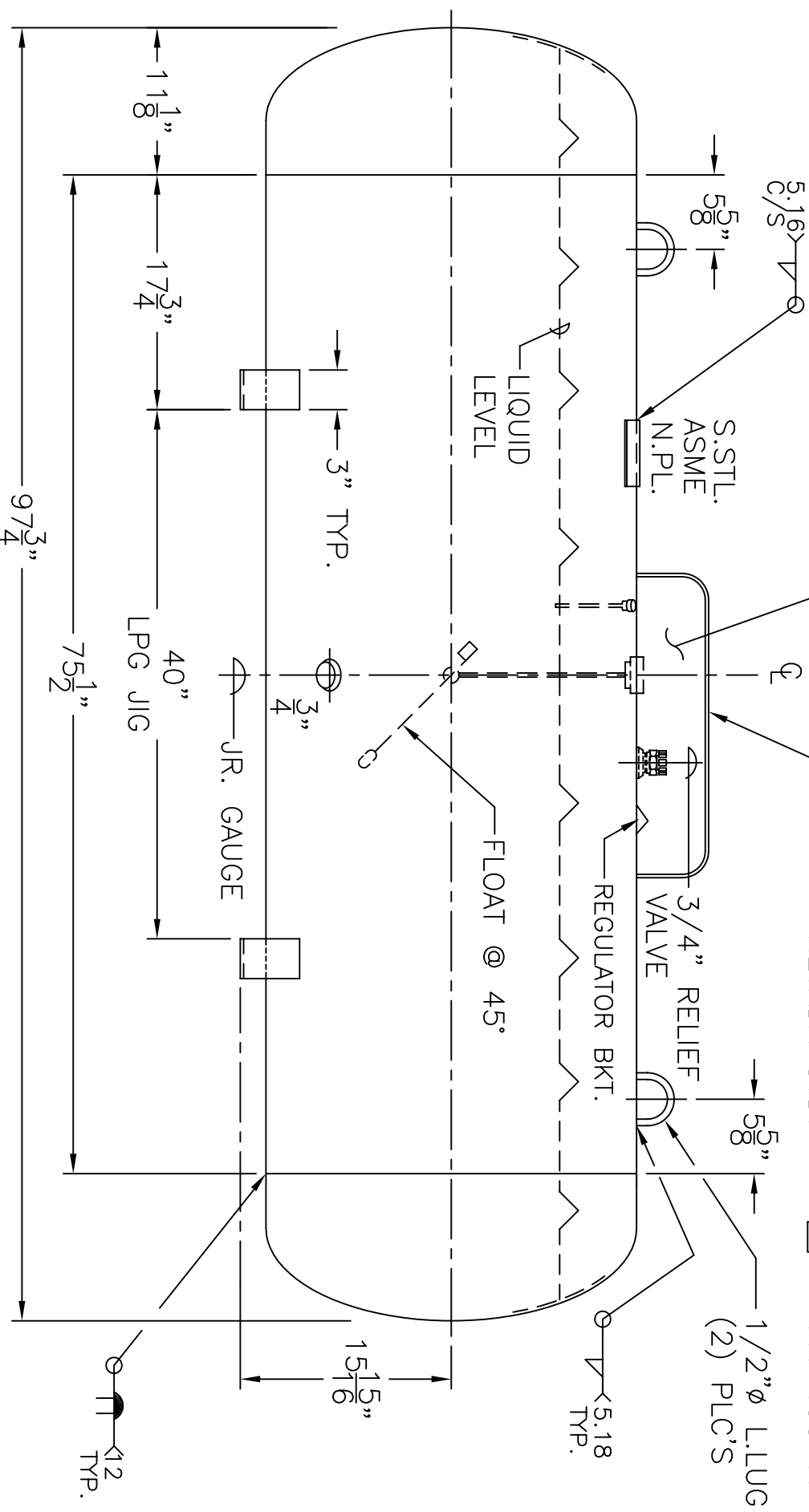


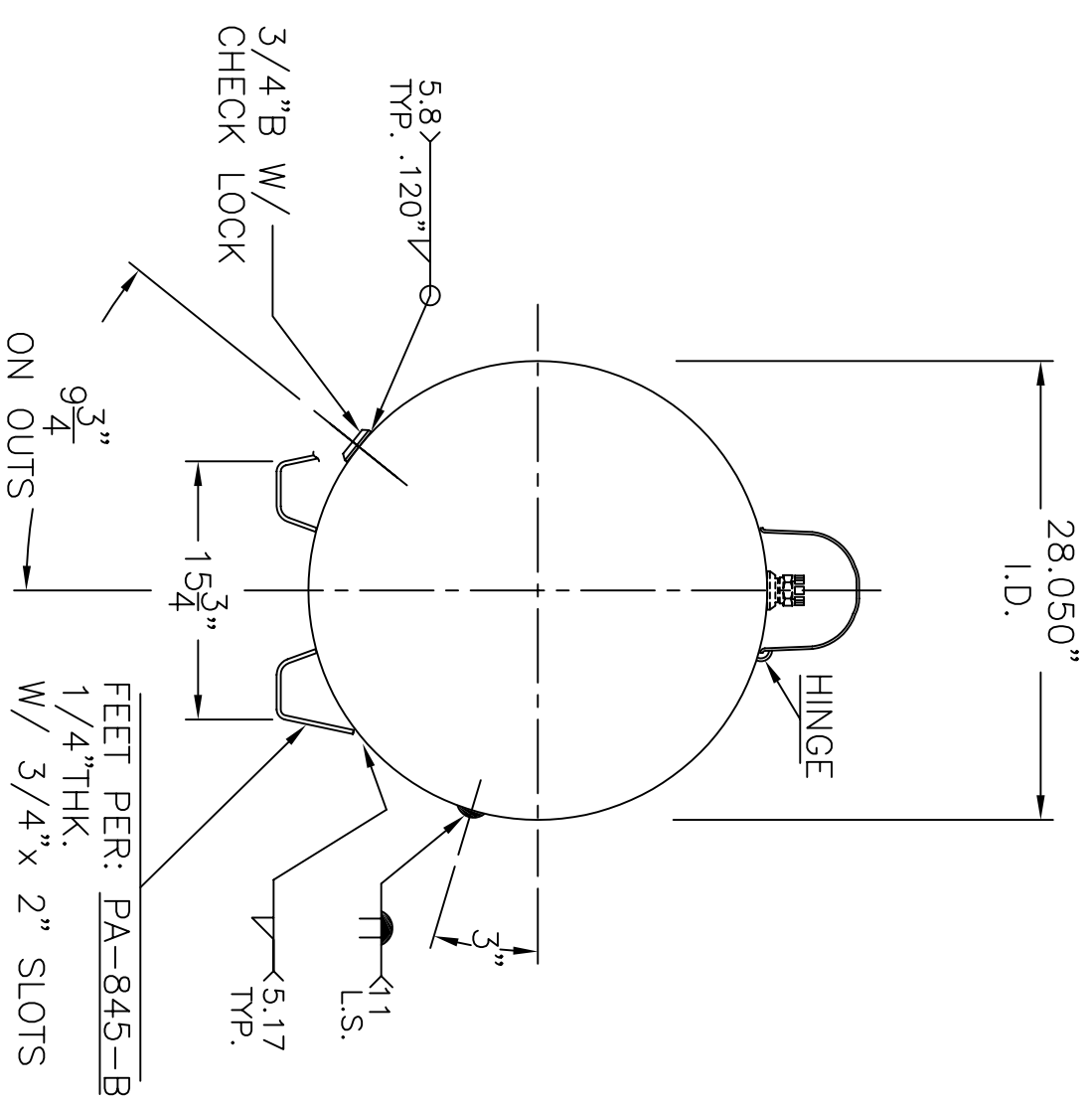
NOTE: P.O.L. V.R. FILLER, OUTAGE OMITTED FROM THIS VIEW FOR CLARITY

LAYOUT DIMENSIONS PER: UNIVERSAL----- = SK-2617 REV. II CALIFORNIA STD.- = PA-432-A NEVADA STD. --- = PA-433-A



GENERAL NOTES

1. SHELL: .195" SA-455
2. HEADS: .166" SA-414-G 2:1 S.E. JOGGLE
3. X-RAY: RT-4 SPOT L.S. & G.S.
4. STRESS REL., NO
5. CORR. ALLOW: NONE
6. ASME SEC. VIII DIV. 1, 2010 ADD 2010
7. M.A.W.P. 250 PSIG. @ 200 °F
8. HYDRO: 327 PSIG. MIN.
9. GAL: 250
10. EMPTY WT: 580# APPROX.
11. DEHYDRATE INSIDE
12. SURFACE AREA: 64.1 SQ. FT.
13. C.F.M. REQ'D. 1627



P-250	REV. 12-30-10
	DATE: 9-28-98
FOR: HANSON STANDARD	
28.6"Ø - HORIZ. PROPANE TANK	
BY: J.G. SCALE: 1"=12"	
ROY E. HANSON JR. MFG.	
1600 E. WASHINGTON BLVD. LOS ANGELES, CA 90021	