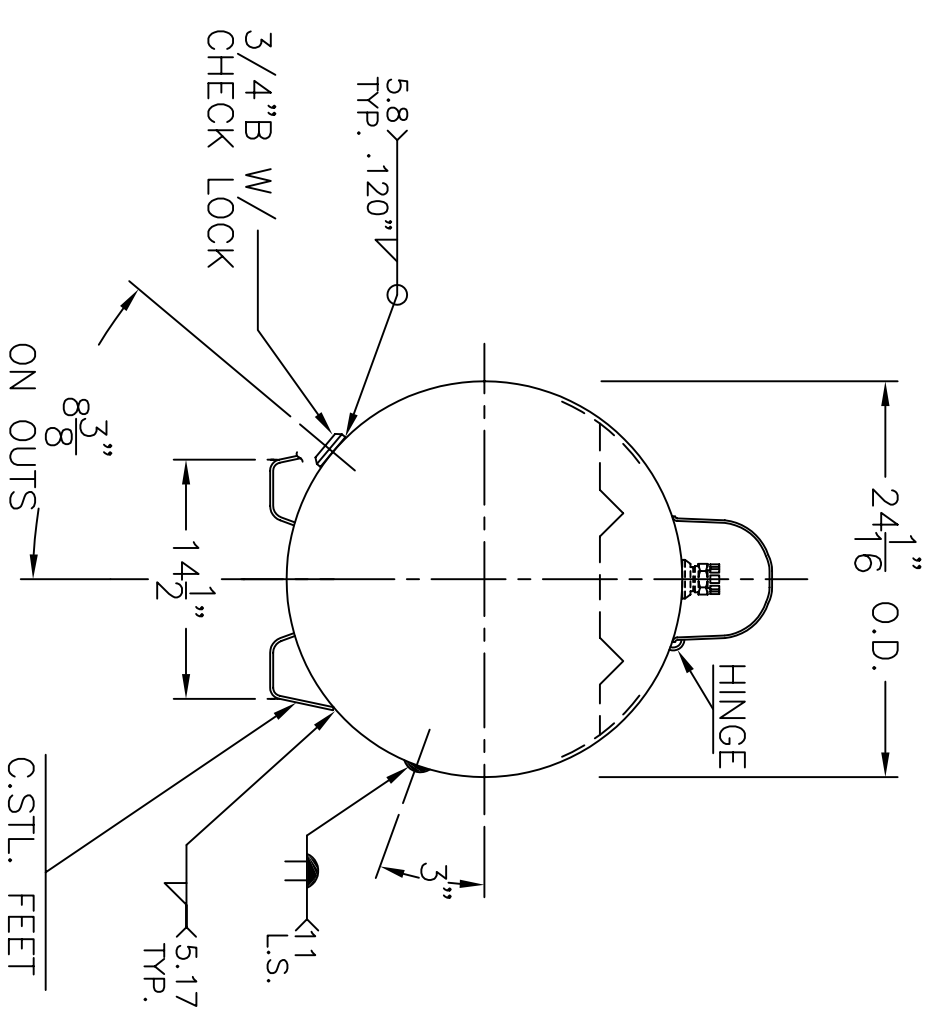
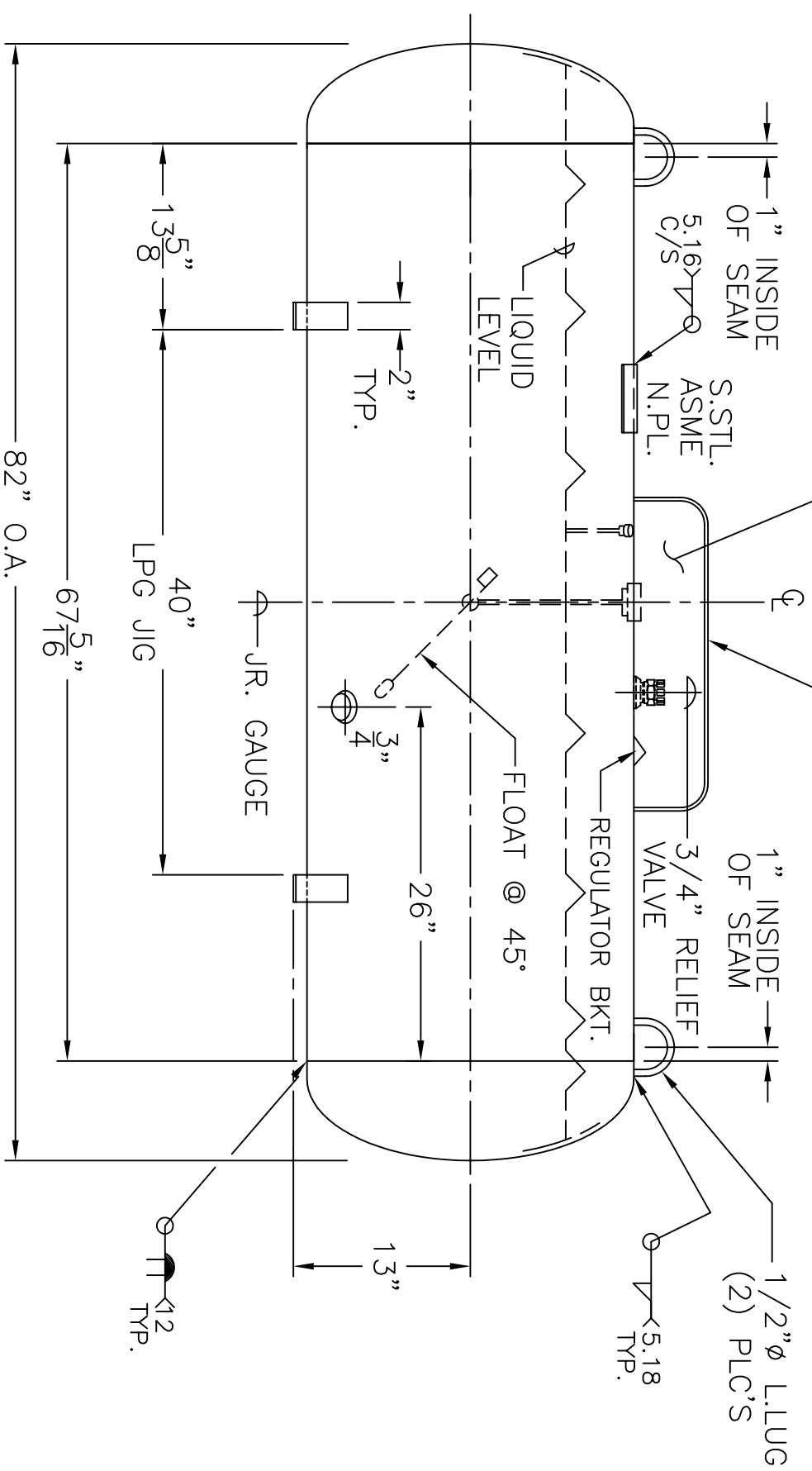


NOTE: P.O.L. 9101R1
 FILLER, OUTAGE
 OMITTED FROM
 THIS VIEW FOR CLARITY

LAYOUT DIMENSIONS PER:
 UNIVERSAL-----□ = SK-2617 REV. II
 CALIFORNIA STD.-□ = PA-432-A
 NEVADA STD.-----□ = PA-433-A



C.STL. FEET
 1/4" x 2" x 8" BAR
 PER: PA-831-B
 W/3/4" x 2" SLOT

GENERAL NOTES

1. SHELL: .175" SA-414-G
2. HEADS: .164" SA-414-G 2:1 S.E.
JOGGLE
3. X-RAY: RT-4 SPOT L.S.
4. STRESS REL., NO
5. CORR. ALLOW: NONE
6. ASME SEC. VIII DIV. 1, 2010 ADD 2010
7. M.A.W.P. 250 PSIG. @ 200 °F
M.D.M.T. -20 °F @ 250 PSIG.
8. HYDRO: 327 PSIG. MIN.
9. GAL: 150
10. EMPTY WT: 376# APPROX.
11. DEHYDRATE INSIDE
12. SURFACE AREA: 45.4 SQ. FT.
13. C.F.M. REQ'D. 1224.7
14. OUTSIDE: WHITE

P-150	REV. 12-30-10
	DATE: 3-11-87
FOR: HANSON STANDARD	
HORIZ. PROPANE TANK	
BY: J.G.	
SCALE: 1"=12"	
ROY E. HANSON JR. MFG.	
1600 E. WASHINGTON BLVD. LOS ANGELES, CA 90021	