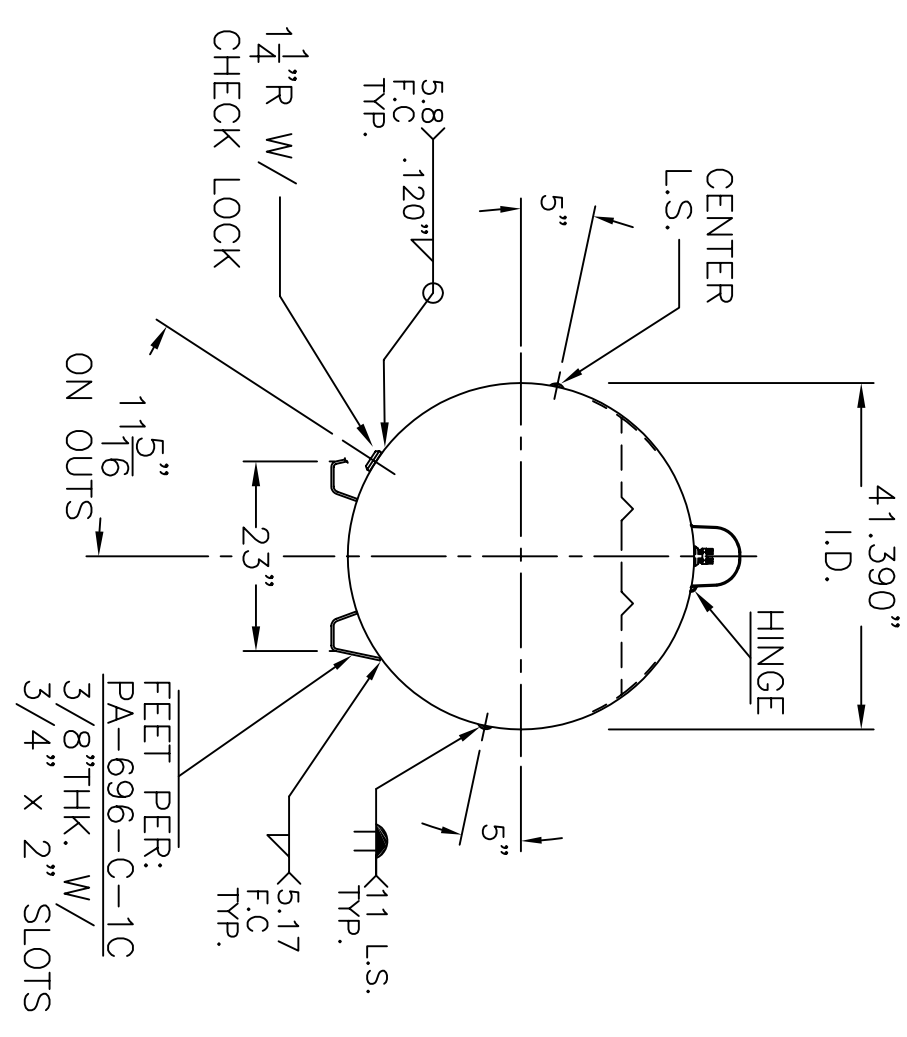
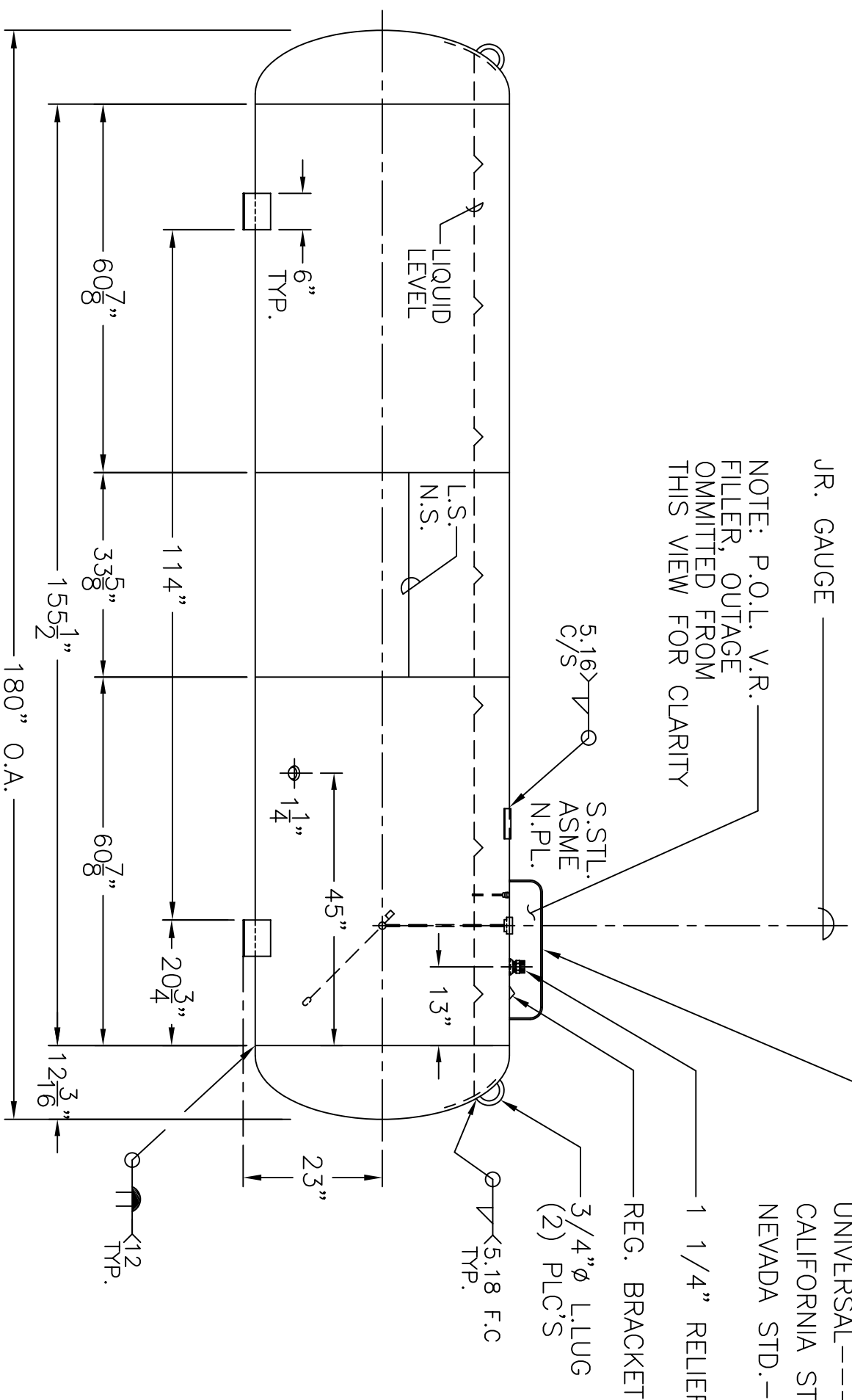


JR. GAUGE

NOTE: P.O.L. V.R. FILLER, OUTAGE OMITTED FROM THIS VIEW FOR CLARITY

LAYOUT DIMENSIONS PER:
UNIVERSAL = SK-2617 REV. II
CALIFORNIA STD. = PA-432-A
NEVADA STD. = PA-433-A



GENERAL NOTES

1. SHELL: .289" SA-455
2. HEADS: .245" SA-455 2:1 S.E.
JOGGLE - .289 OFFSET
3. X-RAY: RT-4 SPOT L.S. & HEAD G.S.
4. STRESS REL., NO
5. CORR. ALLOW: NONE
6. ASME SEC. VIII DIV. 1, 2007 ADD 2009
7. M.A.W.P. 250 PSIG. @ 200 °F
M.D.M.T. -20 °F @ 250 PSIG.
8. HYDRO: 327 PSIG. MIN.
9. GAL: 1000
10. EMPTY WT: 2200# APPROX.
11. DEHYDRATE INSIDE
12. SURFACE AREA: 172.1 SQ. FT.
13. C.F.M. REQ'D. 3654
14. OUTSIDE: PRIME & WHITE

P-1000	REV. 6-29-10
	DATE: 3-11-87

FOR: HANSON STANDARD
MODEL No. 1000

42"Ø - HORIZ. PROPANE TANK
BY: J.G. SCALE: 1/2"=12"

ROY E. HANSON JR. MFG.
1600 E. WASHINGTON BLVD.
LOS ANGELES, CA 90021